

Map of the Mount Saint Lawrence Cemetery, Limerick showing distribution of words frequently found on inscriptions: memory

Displaying 2376 graves.

Reference Number

Grave Inscription



Map of the Mount Saint Lawrence Cemetery, Limerick showing distribution of words frequently found on inscriptions: beloved

Displaying 405 graves.

Reference Number

Grave Inscription

Search

Reset



Map of the Mount Saint Lawrence Cemetery, Limerick showing distribution of words frequently found on inscriptions: soul

Displaying 211 graves.

Reference Number

Grave Inscription

Search

Reset



Map of the Mount Saint Lawrence Cemetery, Limerick showing distribution of words frequently found on inscriptions: departed

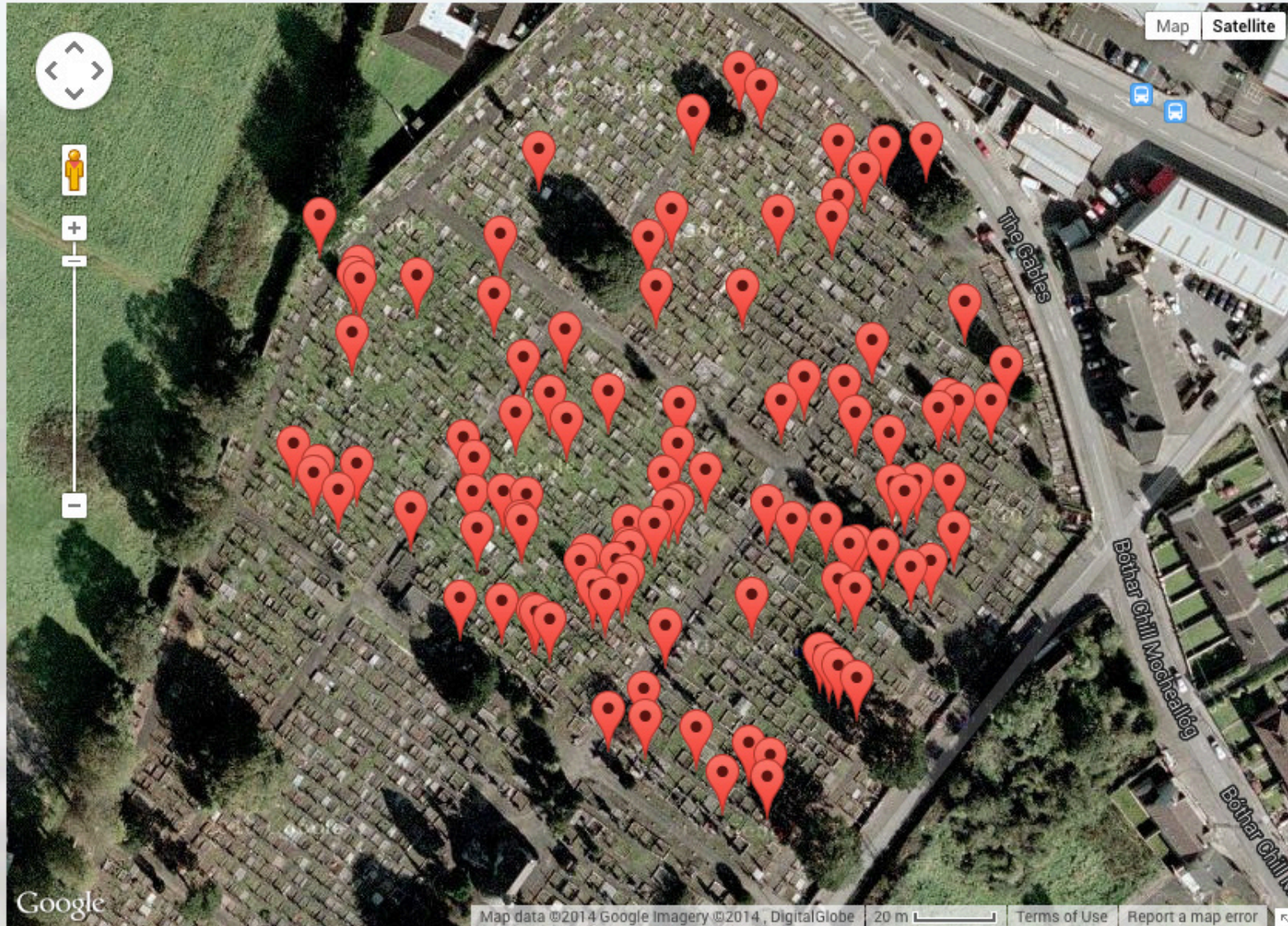
Displaying 107 graves.

Reference Number

Grave Inscription

Search

Reset



Map of the Mount Saint Lawrence Cemetery, Limerick showing distribution of words frequently found on inscriptions: angel

Displaying 107 graves.

Reference Number

Grave Inscription

Search

Reset



Memory  
Life Pray Rest Dear Love Christ Deposed Peace Soul Beloved Mercy  
Jesus

Died  
Loving

Words represented more than 10 times from grave memorials within Mount Saint Lawrence Cemetery, Limerick

A word cloud visualization of terms found on grave memorials. The words are arranged in a roughly rectangular shape, with 'Memory' and 'Died' being the largest and most prominent. Other significant words include 'Loving', 'Love', 'Beloved', 'Rest', 'Soul', 'Peace', 'Christ', 'Jesus', 'Mercy', 'Pray', 'Dear', 'Life', 'Born', 'Departed', and 'Eternal'. The font is a classic serif typeface, and the words are in black on a white background.

Memory  
Died  
Loving  
Love  
Beloved  
Rest  
Soul  
Peace  
Christ  
Jesus  
Mercy  
Pray  
Dear  
Life  
Born  
Departed  
Eternal

Words represented (less 'memory', 'loving' and 'died') from grave memorials within Mount Saint Lawrence Cemetery, Limerick



ESTEEM  
AFFECTION

THANKS **LIFE**

**SOUL** LOST

AFFECTIONATE FOREVER

**MERCY** BUILDER  
DEVOTED

REUNITED CHERISHED SMILING FORGOTTEN

**BELOVED**

HERE **PRAY DEAR**  
JOY

RELIC **REST** GRACE  
SUDDEN PACE

**BODY** GOD **AT** SLEEP  
GOOD CITY TRAGICALLY

**YOUNG** **DEPARTED**  
MISSED

**ANGEL** **PEACE**  
FRIEND

PRECIOUS **JESUS** HEART  
DEEPLY **END**

MUCH **REMEMBER** THOUGHTS  
REMAINS

**SAFE** **CHRIST** PASSED  
SIGHT KILLED  
TAKEN HAPPY

**SACRED** HEAVEN **BORN**  
TREASURED